

# LANSING SCHOOL DISTRICT 158

## LANSING, ILLINOIS



# ILLINOIS DISTRICT REPORT CARD

State and federal laws require public school districts to release report cards to the public each year.

### STUDENTS

#### RACIAL/ETHNIC BACKGROUND AND OTHER INFORMATION

	White	Black	Hispanic	Asian/ Pacific Islander	Native American	Low- Income Rate	Limited- English- Proficient Rate	High Sch. Dropout Rate	Chronic Truancy Rate	Mobility Rate	Attendance Rate	Total Enrollment
District	57.0	31.8	10.7	0.5	0.0	14.2	2.1		0.2	21.9	94.9	2,027
State	57.7	20.8	17.7	3.6	0.2	39.0	6.7		2.1	16.8	94.2	2,060,048

**Low-income** students come from families receiving public aid; live in institutions for neglected or delinquent children; are supported in foster homes with public funds; or are eligible to receive free or reduced-price lunches.

**Limited-English-proficient** students are those students eligible for transitional bilingual programs.

**Mobility rate** is based on the number of times students enroll in or leave a school during the school year.

**Chronic truants** are students who are absent from school without valid cause for 18 or more of the last 180 school days.

### INSTRUCTIONAL SETTING

#### PARENTAL CONTACT\*

	Percent
District	99.8
State	96.3

#### AVERAGE CLASS SIZE (as of the first school day in May)

Grade	Grade	Grade	Grade	Grade	High
K	1	3	6	8	School
21.2	20.4	23.2	29.0	27.5	
21.0	21.6	22.6	23.7	23.1	

#### STAFF-TO-STUDENT RATIOS

Pupil- Teacher Elementary	Pupil- Teacher Secondary	Pupil- Certified Staff	Pupil- Administrator
19.9		14.8	235.4
19.4		14.1	208.7

\* Parental contact includes parent-teacher conferences, parental visits to school, school visits to home, telephone conversations, and written correspondence.

#### TIME DEVOTED TO TEACHING CORE SUBJECTS (Minutes Per Day)

Grades	Mathematics			Science			English/Language Arts			Social Science		
	3	6	8	3	6	8	3	6	8	3	6	8
District	45	43	43	30	43	43	152	86	86	31	43	43
State	57	52	50	30	43	44	146	105	93	31	43	44

#### TEACHER INFORMATION (Full-Time Equivalents)

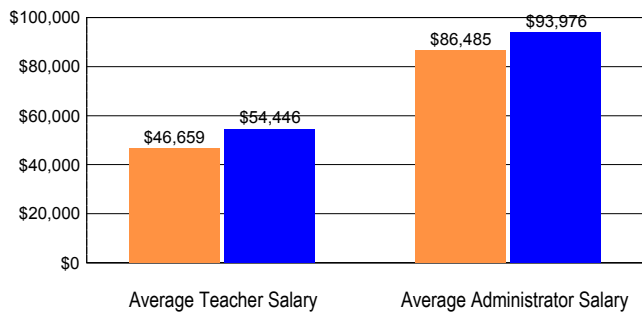
	White	Black	Hispanic	Asian/ Pacific Islander	Native American	Male	Female	Total Number
District	96.7	2.5	0.8	0.0	0.0	12.6	87.4	120
State	85.0	9.8	4.0	1.0	0.1	23.4	76.6	125,702

**TEACHER INFORMATION (Continued)**

	Average Teaching Experience (Years)	% of Teachers with Bachelor's Degrees	% of Teachers with Master's & Above	% of Teachers with Emergency or Provisional Credentials	% of Classes Not Taught by Highly Qualified Teachers
District	16.2	36.8	63.2	0.0	0.0
State	13.8	51.3	48.6	1.7	1.8

**SCHOOL DISTRICT FINANCES**

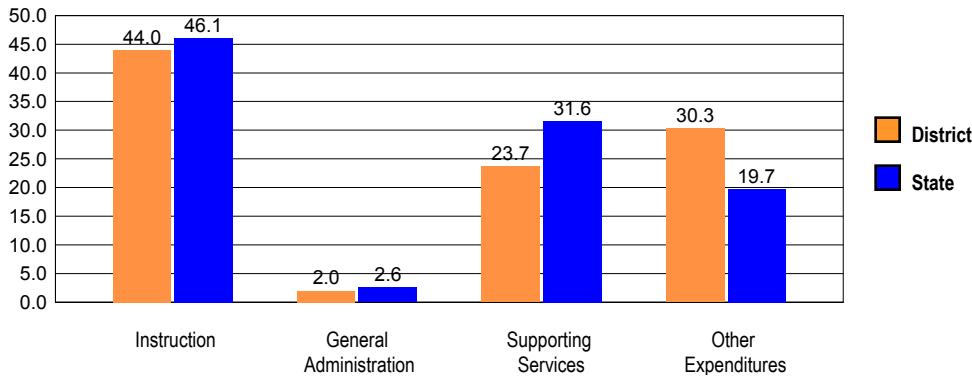
**TEACHER/ADMINISTRATOR SALARIES (Full-Time Equivalents)**



Salaries and counts of staff are summed across a district based on the percentage of time that each individual is employed as a teacher or an administrator and may or may not reflect the actual paid salaries for the district.

■ District  
■ State

**EXPENDITURE BY FUNCTION 2002-03 (Percentages)**



■ District  
■ State

**REVENUE BY SOURCE 2002-03**

	District	District %	State %
Local Property Taxes	\$9,479,312	71.1	56.6
Other Local Funding	\$578,100	4.3	5.4
General State Aid	\$1,999,027	15.0	17.9
Other State Funding	\$846,874	6.4	12.1
Federal Funding	\$426,749	3.2	8.0
<b>TOTAL</b>	<b>\$13,330,062</b>		

**EXPENDITURE BY FUND 2002-03**

	District	District %	State %
Education	\$12,635,827	69.1	70.1
Operations & Maintenance	\$1,004,615	5.5	8.9
Transportation	\$703,137	3.8	3.5
Bond and Interest	\$1,192,109	6.5	6.0
Rent	\$0	0.0	0.0
Municipal Retirement/ Social Security	\$237,884	1.3	1.5
Fire Prevention & Safety	\$163,710	0.9	0.9
Site & Construction/ Capital Improvement	\$2,338,401	12.8	9.0
<b>TOTAL</b>	<b>\$18,275,683</b>		

OTHER FINANCIAL INDICATORS				
	2001 Equalized Assessed Valuation per Pupil	2001 Total School Tax Rate per \$100	2002-03 Instructional Expenditure per Pupil	2002-03 Operating Expenditure per Pupil
District	\$146,308	3.46	\$4,312	\$7,042
State	**	**	\$5,022	\$8,482

\*\* Due to the way Illinois school districts are configured, state averages for equalized assessed valuation per pupil and total school tax rate per \$100 are not provided.

Equalized assessed valuation includes all computed property values upon which a district's local tax rate is calculated.

Total school tax rate is a district's total tax rate as it appears on local property tax bills.

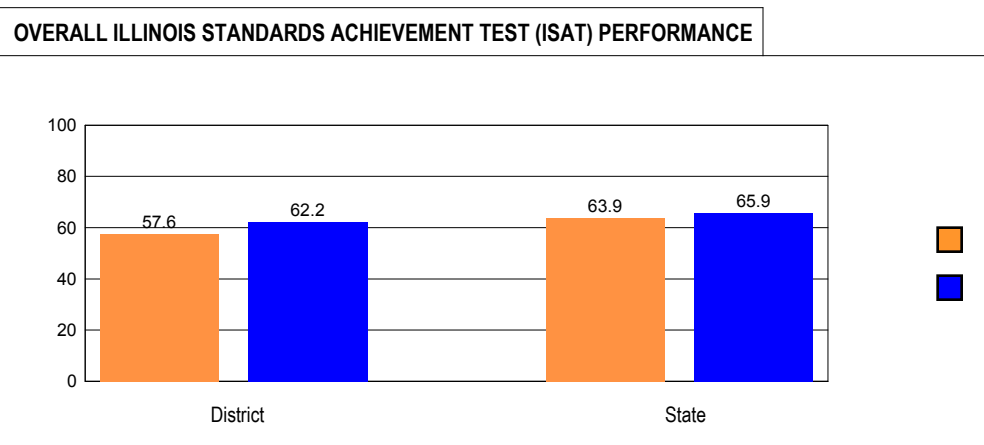
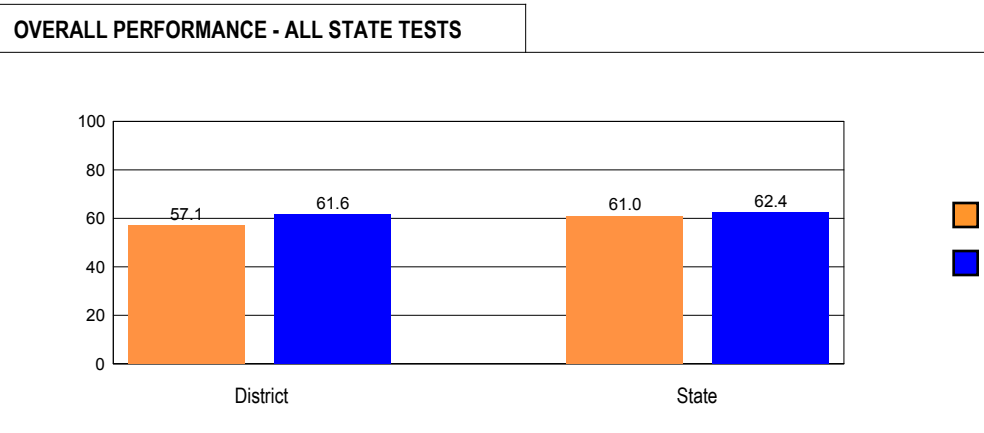
Instructional expenditure per pupil includes the direct costs of teaching pupils or the interaction between teachers and pupils.

Operating expenditure per pupil includes the gross operating cost of a school district excluding summer school, adult education, bond principal retired, and capital expenditures.

## ACADEMIC PERFORMANCE

### OVERALL STUDENT PERFORMANCE

These charts present the overall percentages of state test scores categorized as meeting or exceeding the Illinois Learning Standards for your school, district, and the state. These performance measures include only those test scores for the grades and subjects included in your district.



**OVERALL ILLINOIS MEASURE OF ANNUAL GROWTH IN ENGLISH (IMAGE) PERFORMANCE**

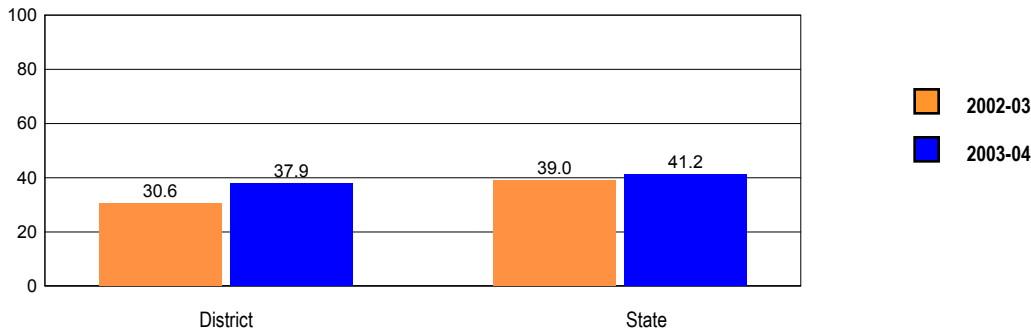
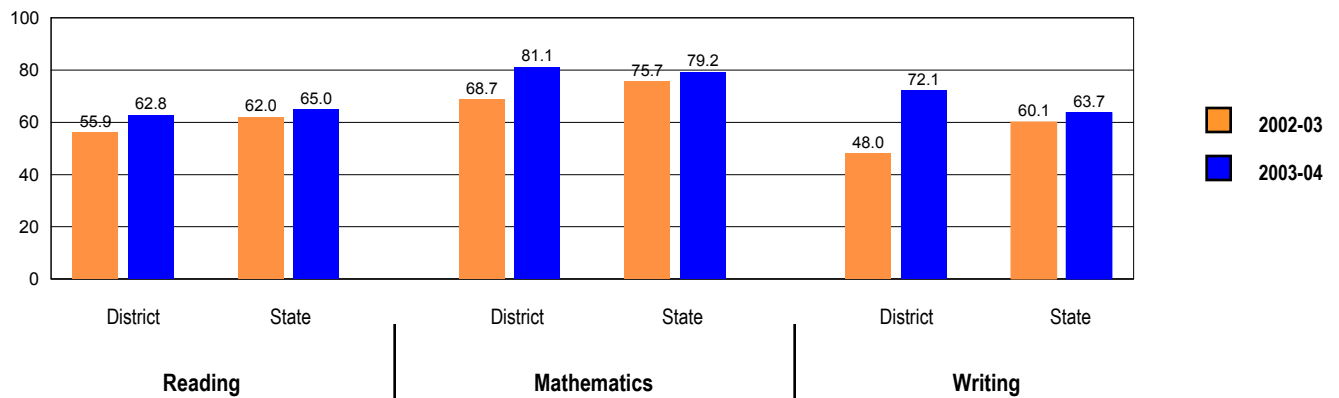


IMAGE scores in the Expanding and Transitioning performance levels count the same, respectively, as scores on other state assessments that meet or exceed Standards.

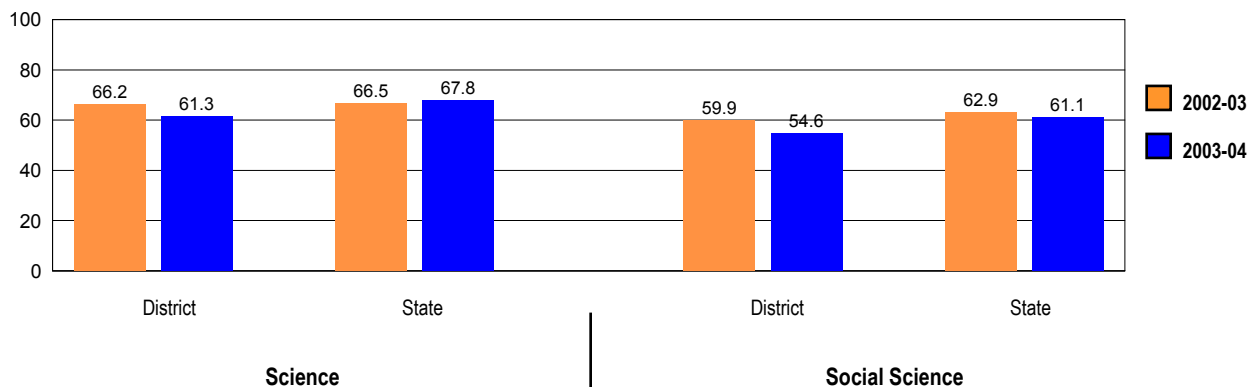
**ISAT PERFORMANCE**

These charts provide information on attainment of the Illinois Learning Standards. They show the percents of student scores meeting or exceeding Standards for the grades and subjects tested on ISAT.

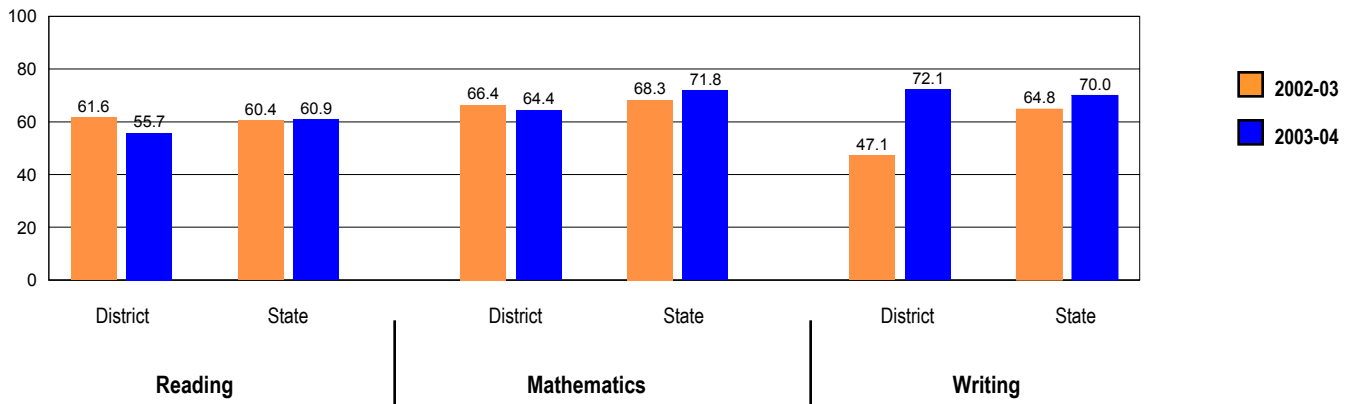
**ISAT Grade 3**



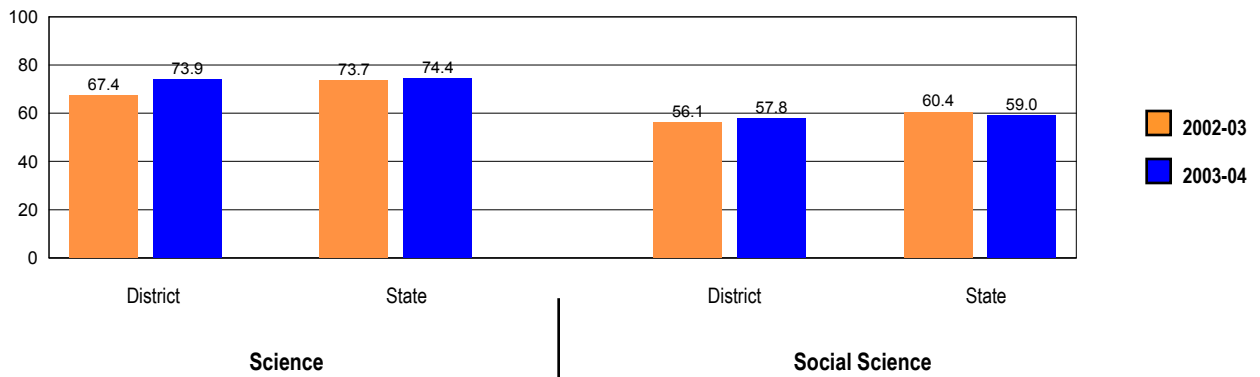
**ISAT Grade 4**



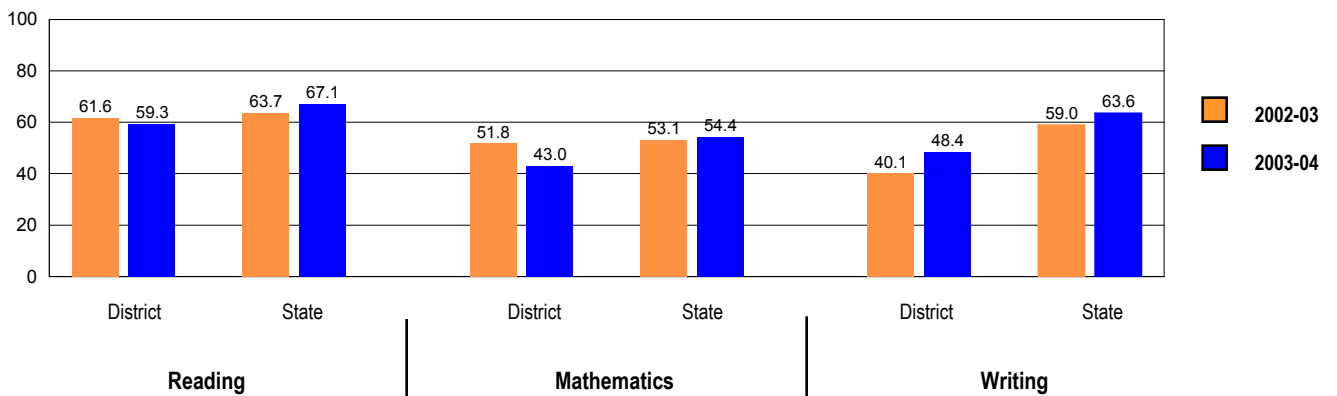
ISAT Grade 5



ISAT Grade 7



ISAT Grade 8



**PERFORMANCE ON STATE ASSESSMENTS**

Federal law requires that student achievement results for schools providing Title I services be reported to the general public.

The Illinois Standards Achievement Test (ISAT) is administered to students in grades 3, 4, 5, 7, and 8. The Prairie State Achievement Examination (PSAE) is administered to students in grade 11. The Illinois Measure of Annual Growth in English (IMAGE) is administered to students in state-approved transitional bilingual programs. The Illinois Alternate Assessment (IAA) is administered to students with disabilities whose Individualized Education Programs (IEPs) indicate that participation in the ISAT or PSAE would not be appropriate.

Students with disabilities have an IEP (No Child Left Behind Act). An IEP is a written plan for a child with a disability who is eligible to receive special education services under the Individuals with Disabilities Education Act.

Schools with grade 2 as the highest grade in the school use a state-adopted test in reading and mathematics to meet this requirement.

In order to protect students' identities, test data for groups of fewer than ten students are not reported.

PERCENTAGE OF STUDENTS NOT TESTED IN STATE TESTING PROGRAMS														
		Gender			Racial/Ethnic Background									
		All	Male	Female	White	Black	Hispanic	Asian/ Pacific Islander	Native American	Multi racial /Ethnic	LEP	Migrant	Students with Disabilities	Econo- mically Disadv- antaged
District	*Enrollment	715	373	342	397	230	83	5	0	0	23	0	126	92
	Reading	0.7	0.8	0.6	0.3	0.4	2.4				4.3		0.0	0.0
	Mathematics	0.6	0.3	0.9	0.5	0.0	1.2				0.0		0.0	0.0
State	*Enrollment	618,426	315,150	303,276	362,539	126,432	103,851	22,726	1,038	1,840	43,504	259	89,425	239,387
	Reading	0.9	1.0	0.8	0.4	2.2	1.2	0.6	2.2	0.7	0.9	7.3	2.4	1.4
	Mathematics	0.9	1.1	0.9	0.4	2.3	1.3	0.6	1.9	0.8	1.3	6.9	2.5	1.5

\* Enrollment on the first day of state testing.

**ILLINOIS STANDARDS ACHIEVEMENT TEST (ISAT)**

The following tables show the percentages of student scores in each of four performance levels. These levels were established with the help of Illinois educators who teach the grade levels and learning areas tested. Due to rounding, the sum of the percentages in the four performance levels may not always equal 100.

- Level 1 -- Academic Warning - Student work demonstrates limited knowledge and skills in the subject. Because of major gaps in learning, students apply knowledge and skills ineffectively.
- Level 2 -- Below Standards - Student work demonstrates basic knowledge and skills in the subject. However, because of gaps in learning, students apply knowledge and skills in limited ways.
- Level 3 -- Meets Standards - Student work demonstrates proficient knowledge and skills in the subject. Students effectively apply knowledge and skills to solve problems.
- Level 4 -- Exceeds Standards - Student work demonstrates advanced knowledge and skills in the subject. Students creatively apply knowledge and skills to solve problems and evaluate the results.

**Grade 3**

**Grade 3 - All**

Levels	Reading				Mathematics				Writing			
	1	2	3	4	1	2	3	4	1	2	3	4
District State	7.5	29.6	47.8	15.0	4.8	14.1	59.0	22.0	4.4	23.5	72.1	0.0
	7.0	27.9	42.4	22.7	6.8	14.0	46.1	33.0	5.2	31.1	61.0	2.8

**Grade 3 - Gender**

Levels	Reading				Mathematics				Writing			
	1	2	3	4	1	2	3	4	1	2	3	4
Male District State	11.4	38.1	37.1	13.3	7.5	14.0	50.5	28.0	8.5	27.4	64.2	0.0
	8.6	29.4	41.7	20.2	7.5	13.4	44.4	34.7	7.1	35.6	55.5	1.8
Female District State	4.1	22.3	57.0	16.5	2.5	14.2	66.7	16.7	0.8	20.0	79.2	0.0
	5.4	26.3	43.0	25.3	6.1	14.7	48.0	31.2	3.2	26.4	66.7	3.7

**Grade 3 - Racial/Ethnic Background**

Levels	Reading				Mathematics				Writing			
	1	2	3	4	1	2	3	4	1	2	3	4
White District State	6.1	23.5	49.2	21.2	3.0	9.1	56.1	31.8	3.0	20.5	76.5	0.0
	3.2	20.0	46.2	30.7	2.3	8.0	45.8	43.9	2.9	25.3	68.1	3.6
Black District State	10.5	39.5	43.4	6.6	5.2	22.1	66.2	6.5	6.6	27.6	65.8	0.0
	16.5	44.6	32.2	6.8	18.3	28.0	44.4	9.3	10.8	44.0	44.2	1.0
Hispanic District State	5.9	35.3	52.9	5.9	17.6	17.6	47.1	17.6	5.9	29.4	64.7	0.0
	8.0	36.2	43.8	12.0	6.5	17.5	54.5	21.6	5.7	36.3	56.5	1.5
Asian/Pacific Islander District State	1.5	13.2	45.6	39.7	1.1	4.2	34.8	59.9	1.1	18.2	74.8	5.9
Native American District State	7.3	33.0	41.3	18.3	7.3	14.2	46.8	31.7	5.1	40.7	50.5	3.7
Multiracial/Ethnic District State	3.8	24.7	45.9	25.6	4.0	10.4	49.5	36.1	3.7	30.6	63.7	2.0

**Grade 3 - Students with Disabilities**

Levels	Reading				Mathematics				Writing			
	1	2	3	4	1	2	3	4	1	2	3	4
IEP District State	31.0	45.2	11.9	11.9	14.0	25.6	48.8	11.6	14.3	35.7	50.0	0.0
	22.3	42.1	27.2	8.4	17.3	23.0	43.5	16.2	17.3	41.7	40.0	1.0
Non-IEP District State	2.2	26.1	56.0	15.8	2.7	11.4	61.4	24.5	2.2	20.7	77.2	0.0
	4.5	25.6	44.9	25.1	5.1	12.5	46.6	35.8	3.2	29.4	64.4	3.0

**Grade 3 - Economically Disadvantaged**

Levels	Reading				Mathematics				Writing			
	1	2	3	4	1	2	3	4	1	2	3	4
Free/Reduced Price Lunch District State	10.3	30.8	56.4	2.6	7.7	15.4	59.0	17.9	10.3	28.2	61.5	0.0
	13.1	40.7	36.9	9.3	13.3	23.3	48.4	14.9	9.1	41.0	48.8	1.1
Not Eligible District State	7.0	29.4	46.0	17.6	4.3	13.8	59.0	22.9	3.2	22.5	74.3	0.0
	2.8	18.9	46.2	32.1	2.2	7.5	44.5	45.8	2.4	24.2	69.5	3.9

**Grade 4**

**Grade 4 - All**

Levels	Science				Social Science			
	1	2	3	4	1	2	3	4
District	6.7	32.1	52.5	8.8	10.0	35.4	50.4	4.2
State	6.0	26.2	54.6	13.2	9.7	29.3	53.9	7.1

**Grade 4 - Gender**

Levels	Science				Social Science			
	1	2	3	4	1	2	3	4
Male								
District	3.7	33.6	50.7	11.9	11.9	34.3	47.8	6.0
State	6.4	24.7	53.6	15.2	10.4	27.9	53.5	8.2
Female								
District	10.4	30.2	54.7	4.7	7.5	36.8	53.8	1.9
State	5.5	27.8	55.6	11.1	8.9	30.7	54.4	6.0

**Grade 4 - Racial/Ethnic Background**

Levels	Science				Social Science			
	1	2	3	4	1	2	3	4
White								
District	0.8	18.7	67.5	13.0	2.4	28.5	61.0	8.1
State	2.0	15.8	62.8	19.4	3.7	20.6	65.4	10.3
Black								
District	17.4	52.3	26.7	3.5	22.1	52.3	25.6	0.0
State	16.5	48.1	33.6	1.8	25.1	45.8	28.0	1.0
Hispanic								
District	0.0	31.0	62.1	6.9	6.9	17.2	75.9	0.0
State	5.5	35.5	54.3	4.7	9.9	40.3	47.4	2.5
Asian/Pacific Islander								
District								
State	1.2	12.7	63.3	22.8	1.6	15.6	68.1	14.7
Native American								
District								
State	4.1	18.8	59.7	17.4	5.3	22.9	63.0	8.7
Multiracial/Ethnic								
District								
State	3.5	23.7	60.0	12.8	6.0	27.1	60.4	6.5

**Grade 4 - Students with Disabilities**

Levels	Science				Social Science			
	1	2	3	4	1	2	3	4
IEP								
District	13.5	46.2	34.6	5.8	19.2	38.5	40.4	1.9
State	13.6	38.4	42.1	5.8	22.7	39.7	34.9	2.7
Non-IEP								
District	4.8	28.2	57.4	9.6	7.4	34.6	53.2	4.8
State	4.6	24.1	56.8	14.5	7.4	27.4	57.3	7.9

**Grade 4 - Economically Disadvantaged**

Levels	Science				Social Science			
	1	2	3	4	1	2	3	4
Free/Reduced Price Lunch								
District	16.3	39.5	39.5	4.7	18.6	51.2	30.2	0.0
State	11.5	41.3	43.5	3.8	18.3	43.2	36.9	1.6
Not Eligible								
District	4.6	30.5	55.3	9.6	8.1	32.0	54.8	5.1
State	2.2	15.8	62.3	19.8	3.7	19.6	65.8	10.9

**Grade 5**

**Grade 5 - All**

Levels	Reading				Mathematics				Writing			
	1	2	3	4	1	2	3	4	1	2	3	4
District	1.3	43.0	40.4	15.3	1.3	34.3	61.9	2.5	3.9	24.0	68.7	3.4
State	1.7	37.4	35.9	25.0	2.9	25.2	59.8	12.0	4.4	25.7	65.7	4.3

**Grade 5 - Gender**

Levels	Reading				Mathematics				Writing				
	1	2	3	4	1	2	3	4	1	2	3	4	
Male	District	2.3	51.1	29.8	16.8	2.3	35.9	58.8	3.1	7.0	28.9	60.9	3.1
	State	2.3	38.9	35.4	23.4	3.7	25.5	58.0	12.8	6.2	30.8	60.5	2.4
Female	District	0.0	32.7	53.8	13.5	0.0	32.4	65.7	1.9	0.0	18.1	78.1	3.8
	State	1.1	35.9	36.3	26.7	2.2	25.0	61.6	11.2	2.4	20.4	71.1	6.1

**Grade 5 - Racial/Ethnic Background**

Levels	Reading				Mathematics				Writing				
	1	2	3	4	1	2	3	4	1	2	3	4	
White	District	0.8	35.0	44.2	20.0	1.7	24.8	69.4	4.1	3.4	10.9	80.7	5.0
	State	0.9	27.4	38.7	33.0	1.3	16.2	66.1	16.4	2.7	19.9	71.7	5.7
Black	District	2.2	56.2	36.0	5.6	1.1	50.6	48.3	0.0	5.7	38.6	53.4	2.3
	State	3.9	59.4	27.7	8.9	7.9	48.0	42.1	2.0	9.3	40.4	49.1	1.2
Hispanic	District	0.0	34.6	38.5	26.9	0.0	23.1	73.1	3.8	0.0	34.6	65.4	0.0
	State	1.8	48.3	36.3	13.6	2.5	30.5	61.7	5.3	4.3	30.3	63.6	1.8
Asian/Pacific Islander	District												
	State	0.4	19.9	38.5	41.1	0.4	8.1	60.8	30.7	1.1	12.1	77.9	8.9
Native American	District												
	State	0.8	32.9	41.2	25.1	1.6	22.6	66.3	9.5	2.1	26.6	67.2	4.1
Multiracial/Ethnic	District												
	State	1.9	35.1	37.5	25.4	1.2	30.0	53.3	15.5	3.4	23.0	68.5	5.1

**Grade 5 - Students with Disabilities**

Levels	Reading				Mathematics				Writing				
	1	2	3	4	1	2	3	4	1	2	3	4	
IEP	District	7.3	68.3	19.5	4.9	4.9	58.5	34.1	2.4	23.7	42.1	31.6	2.6
	State	8.8	66.3	18.7	6.2	13.5	47.4	36.3	2.7	19.4	42.4	37.2	1.0
Non-IEP	District	0.0	37.6	44.8	17.5	0.5	29.2	67.7	2.6	0.0	20.5	75.9	3.6
	State	0.5	32.4	38.8	28.3	1.1	21.4	63.8	13.7	1.9	22.9	70.4	4.8

**Grade 5 - Economically Disadvantaged**

Levels	Reading				Mathematics				Writing				
	1	2	3	4	1	2	3	4	1	2	3	4	
Free/Reduced Price Lunch	District	0.0	50.0	47.4	2.6	0.0	44.7	55.3	0.0	0.0	42.1	57.9	0.0
	State	3.1	54.7	31.6	10.6	5.6	40.2	50.8	3.5	7.7	36.9	53.9	1.5
Not Eligible	District	1.5	41.6	39.1	17.8	1.5	32.3	63.1	3.0	4.6	20.5	70.8	4.1
	State	0.8	25.6	38.8	34.9	1.1	15.0	65.9	17.9	2.1	18.1	73.6	6.1

**Grade 7****Grade 7 - All**

Levels	Science				Social Science			
	1	2	3	4	1	2	3	4
District	11.2	14.9	59.7	14.2	3.0	39.2	51.1	6.7
State	10.4	15.2	57.8	16.6	1.7	39.3	44.3	14.7

**Grade 7 - Gender**

Levels	Science				Social Science			
	1	2	3	4	1	2	3	4
Male								
District	16.2	15.4	52.2	16.2	5.1	44.1	42.6	8.1
State	11.4	14.3	55.1	19.2	2.1	37.7	43.1	17.1
Female								
District	6.1	14.4	67.4	12.1	0.8	34.1	59.8	5.3
State	9.4	16.1	60.6	13.9	1.3	41.0	45.6	12.1

**Grade 7 - Racial/Ethnic Background**

Levels	Science				Social Science			
	1	2	3	4	1	2	3	4
White								
District	6.9	9.7	62.5	20.8	1.4	29.9	59.0	9.7
State	5.0	9.3	62.2	23.6	0.8	26.2	51.9	21.2
Black								
District	18.6	24.7	53.6	3.1	6.2	55.7	36.1	2.1
State	22.8	27.5	46.9	2.8	4.1	67.3	26.3	2.3
Hispanic								
District	8.0	4.0	68.0	20.0	0.0	24.0	68.0	8.0
State	15.8	22.7	55.8	5.7	2.1	55.5	37.8	4.5
Asian/Pacific Islander								
District								
State	3.0	6.8	58.8	31.4	0.3	17.9	55.3	26.5
Native American								
District								
State	11.7	15.0	58.6	14.7	1.3	45.1	45.1	8.4
Multiracial/Ethnic								
District								
State	8.6	15.2	59.2	17.0	1.0	38.2	46.3	14.4

**Grade 7 - Students with Disabilities**

Levels	Science				Social Science			
	1	2	3	4	1	2	3	4
IEP								
District	48.7	25.6	25.6	0.0	10.5	78.9	10.5	0.0
State	32.9	24.4	38.8	3.9	7.9	67.2	21.8	3.0
Non-IEP								
District	4.8	13.1	65.5	16.6	1.7	32.6	57.8	7.8
State	6.6	13.6	61.1	18.8	0.6	34.5	48.2	16.7

**Grade 7 - Economically Disadvantaged**

Levels	Science				Social Science			
	1	2	3	4	1	2	3	4
Free/Reduced Price Lunch								
District	14.8	22.2	51.9	11.1	0.0	55.6	37.0	7.4
State	18.6	24.2	52.2	5.0	3.1	60.7	32.5	3.7
Not Eligible								
District	10.8	14.1	60.6	14.5	3.3	37.3	52.7	6.6
State	5.3	9.6	61.3	23.8	0.8	26.0	51.7	21.5

**Grade 8**

**Grade 8 - All**

Levels	Reading				Mathematics				Writing			
	1	2	3	4	1	2	3	4	1	2	3	4
District	2.3	38.5	51.1	8.1	5.4	51.6	33.0	10.0	5.9	45.7	46.6	1.8
State	1.6	31.3	57.4	9.7	5.6	40.0	37.5	16.9	4.9	31.5	58.7	4.9

**Grade 8 - Gender**

Levels	Reading				Mathematics				Writing				
	1	2	3	4	1	2	3	4	1	2	3	4	
Male	District	1.8	50.4	43.4	4.4	8.8	52.2	31.9	7.1	8.9	58.9	32.1	0.0
	State	2.3	35.2	54.6	7.9	6.7	39.4	36.0	17.8	7.5	38.8	50.7	3.0
Female	District	2.8	25.9	59.3	12.0	1.9	50.9	34.3	13.0	2.8	31.8	61.7	3.7
	State	0.8	27.3	60.3	11.5	4.4	40.5	39.0	16.1	2.2	24.0	66.8	6.9

**Grade 8 - Racial/Ethnic Background**

Levels	Reading				Mathematics				Writing				
	1	2	3	4	1	2	3	4	1	2	3	4	
White	District	0.7	29.5	59.0	10.8	4.3	43.2	38.8	13.7	5.1	37.0	55.1	2.9
	State	0.9	22.8	63.2	13.1	3.1	30.2	43.8	22.9	3.6	26.4	63.6	6.4
Black	District	4.8	58.7	34.9	1.6	7.9	71.4	19.0	1.6	8.1	64.5	27.4	0.0
	State	3.4	48.3	45.7	2.6	13.3	62.1	21.6	3.0	9.1	44.7	45.0	1.3
Hispanic	District	5.9	41.2	47.1	5.9	5.9	52.9	35.3	5.9	5.9	52.9	41.2	0.0
	State	2.0	46.7	48.3	3.0	6.2	55.1	32.7	6.0	5.3	38.2	54.5	2.0
Asian/Pacific Islander	District												
State	0.4	18.1	62.1	19.4	1.2	17.8	39.4	41.6	1.4	16.7	69.9	12.0	
Native American	District												
State	0.8	27.2	61.9	10.1	5.8	38.8	43.5	11.9	7.3	30.9	57.1	4.6	
Multiracial/Ethnic	District												
State	1.8	31.7	57.7	8.8	6.2	47.4	31.3	15.1	4.4	33.4	59.1	3.1	

**Grade 8 - Students with Disabilities**

Levels	Reading				Mathematics				Writing				
	1	2	3	4	1	2	3	4	1	2	3	4	
IEP	District	14.3	68.6	11.4	5.7	34.3	57.1	8.6	0.0	33.3	57.6	9.1	0.0
	State	9.0	66.8	23.1	1.1	27.2	59.0	11.9	2.0	25.2	51.6	22.9	0.4
Non-IEP	District	0.0	32.8	58.6	8.6	0.0	50.5	37.6	11.8	1.1	43.5	53.2	2.2
	State	0.3	25.2	63.4	11.2	1.9	36.7	42.0	19.5	1.5	28.2	64.6	5.7

**Grade 8 - Economically Disadvantaged**

Levels	Reading				Mathematics				Writing				
	1	2	3	4	1	2	3	4	1	2	3	4	
Free/Reduced Price Lunch	District	7.1	78.6	14.3	0.0	14.3	78.6	7.1	0.0	15.4	53.8	30.8	0.0
	State	2.9	47.3	47.1	2.7	10.3	57.2	27.5	5.0	8.3	42.3	47.8	1.6
Not Eligible	District	1.9	35.7	53.6	8.7	4.8	49.8	34.8	10.6	5.3	45.1	47.6	1.9
	State	0.8	22.3	63.2	13.7	2.9	30.2	43.2	23.7	3.0	25.4	64.7	6.8



## 2004 ADEQUATE YEARLY PROGRESS (AYP) INFORMATION

Is this district making Adequate Yearly Progress (AYP)?	No
Is this district making AYP in Reading?	No
Is this district making AYP in Mathematics?	Yes

Has this district been identified for District Improvement according to the AYP specifications of the federal No Child Left Behind Act?	Yes
---	-----

	Percent Tested on State Tests				Percent Meeting/Exceeding Standards *						Other Indicators			
	Reading		Mathematics		Reading			Mathematics			Attendance Rate		Graduation Rate	
	%	Met AYP	%	Met AYP	%	Safe Harbor Target **	Met AYP	%	Safe Harbor Target **	Met AYP	%	Met AYP	%	Met AYP
<b>State AYP Minimum Target</b>	95.0		95.0		40.0			40.0			89.0		66.0	
<b>All</b>	99.3	Yes	99.4	Yes	59.8		Yes	63.0		Yes	94.9	Yes		
<b>White</b>	99.7	Yes	99.5	Yes	67.8		Yes	70.7		Yes				
<b>Black</b>	99.6	Yes	100.0	Yes	44.1		Yes	50.0		Yes				
<b>Hispanic</b>	97.6	Yes	98.8	Yes	63.1		Yes	57.6		Yes				
<b>Asian/Pacific Islander</b>														
<b>Native American</b>														
<b>Multiracial /Ethnic</b>														
<b>LEP</b>														
<b>Students with Disabilities</b>	100.0	Yes	100.0	Yes	25.4	32.7	No	40.0		Yes	94.2			
<b>Economically Disadvantaged</b>	100.0	Yes	100.0	Yes	48.9		Yes	58.0		Yes				

### Three Conditions Are Required For Making Adequate Yearly Progress (AYP)

1. At least 95.0% tested for Reading and Mathematics for the All Group and Subgroups. If the current year's participation rates are less than 95%, the participation rate for AYP will be considered sufficient if the average of the current year and the preceding year is at least 95%, or if the average of the current year and the two preceding years is at least 95%. Only actual participation rates are printed. If the participation rate printed is less than 95% but 'Met AYP' is 'Yes', it means the 95% condition was met by averaging.
2. At least 40.0% Meeting/Exceeding Standards for Reading and Mathematics for the All Group, and at least 37.0% for all Subgroups to compensate for error in measurement for smaller subgroup sizes, or meet Safe Harbor requirements\*\*\*
3. At least 89.0% Attendance Rate for elementary school districts or at least 66.0% Graduation Rate for high school districts. Unit districts must meet both criteria.

\* Includes only students enrolled as of 9/30/03.

\*\* Safe Harbor Targets of 37% or above are not printed.

\*\*\* Subgroups with fewer than 40 students are not reported. Safe harbor only applies to subgroups. In order for safe harbor to apply, a subgroup must decrease by 10% the percentage of scores that did not meet state standards from the previous year plus meet the other indicators (attendance rate for non-high school districts, graduation rate for high school districts, and attendance and graduation rates for unit school districts) for the subgroup. Safe harbor allows school districts an alternate method to meet subgroup minimum targets on achievement.

**SCHOOL IMPROVEMENT STATUS**

Below is a list of the Title I funded schools in the district that are in School Improvement Status as defined by the federal No Child Left Behind Act of 2001.

Number of schools in this district: 4

Number of Title I schools: 2

Number of Title I schools in School Improvement Status: 0

Percent of schools in School Improvement Status: 0%

**School ID**

**School Name**

**Years in School  
Improvement**